

PRODUCT PRESENTATION FOR

# Robert Harris<sup>®</sup>

COFFEE ROASTERS

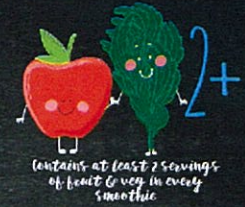
BY  
**Good**<sup>3</sup>

29TH JULY 2016

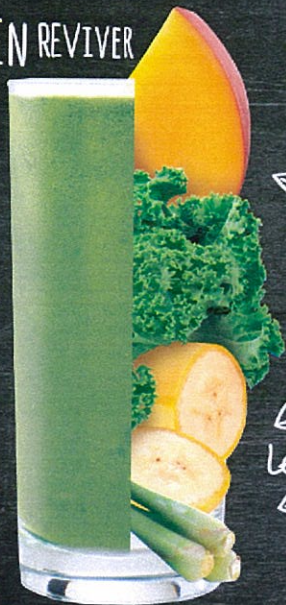


# Ultimate Healthy Smoothies

MADE FROM PREMIUM FRUIT & VEG



GREEN REVIVER



- ↙ mango
- ↙ kale
- ↙ banana
- ↙ lemongrass

GINGER BEET



- ↙ red beets
- ↙ pineapple
- ↙ wild blueberries
- ↙ ginger

CARROT BOOST



- ↙ papaya
- ↙ pineapple
- ↙ carrots
- ↙ goji juice

**Robert Harris®**

COFFEE ROASTERS



*Ready to blend  
just add liquid*



*Real fruit and nothing  
but fruit (and veg too!)*



*Simple and fast  
(less than 1 minute)*



*2 plus servings of fruit  
& veg in every smoothie*



*No ice required*



*Portion controlled -  
right every time*



*No syrups, concentrates  
or additives*



*no added sugar*

AS EASY AS...

BLEND FOR 30 SECONDS

SERVE THE BEST SMOOTHIE  
YOU'VE EVER TASTED!

POUR FRUIT  
SACHET INTO  
BLENDER, FILL  
TO 400ML  
MARK WITH  
APPLE JUICE



**Robert Harris®**  
COFFEE ROASTERS

# Ultimate Healthy Smoothies

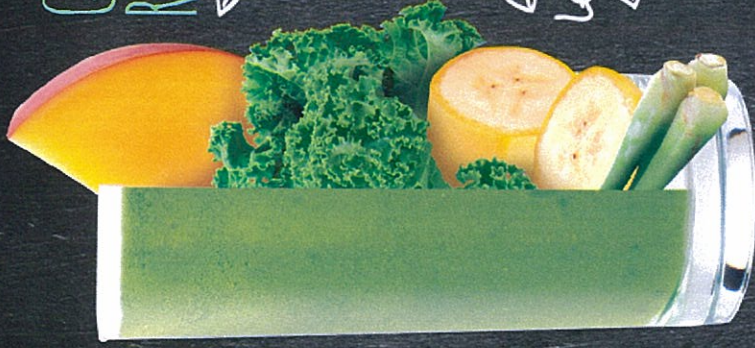


Contains at least 2 servings of fruit & veg in every smoothie

MADE FROM  
PREMIUM FRUIT & VEG

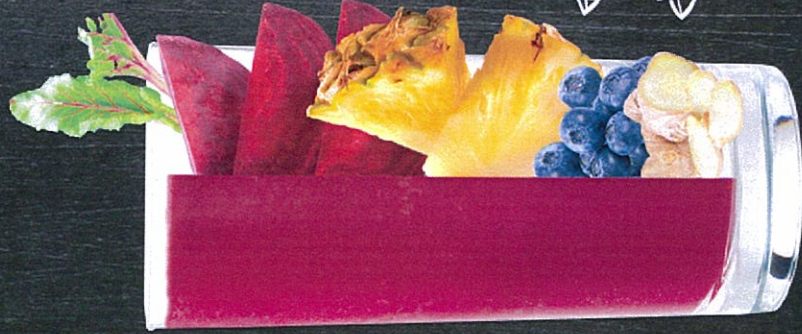
## GREEN REVIVER

- mango
- kale
- banana
- lemongrass



## GINGER BEET

- red beets
- pineapple
- wild blueberries
- ginger



## CARROT BOOST

- papaya
- pineapple
- carrots
- grape juice



Available at

# Robert Harris®

COFFEE ROASTERS

**Good3 Love Smoochie Frozen Fruit and Veg Sr (Crop's)**

**10 x 150g**

**Food Service Distributor Information**

Product	Ingredients	Article	Units/Ctn	Wt/unit	Wt/ctn	Ctn/Dim	Ctn's/layer	Layers/Palle	Ctn's/Pal	Pallet W	Fruit	Fruit	Apple Juice	Smoothie	
											BUY	BUY	BUY	Cost	
											\$/Carton Excl GST	\$/Unit Excl GST	\$1.00/litre Excl GST	\$/unit Exc GST	
<b>Revive and Thrive</b>															
<b>Ginger Beets</b>	Beetroot (35%) Pineapple (32%) Wild Blueberries (13%) Water (13%) Ginger (7%)	GBFS	10	0.15	1.50	238x165x150	30	10	300	450	28.94	2.89	0.25	3.14	
<b>Carrot Boost</b>	Pineapple (40%) Papaya (30%) Carrot (25%) Goji Juice (5%) (goji juice, antioxidants (ascorbic acid, citric acid))	CBFS	10	0.15	1.50	238x165x150	30	10	300	450	28.94	2.89	0.25	3.14	
<b>Green Reviver</b>	Banana (42%)(banana, antioxidants (ascorbic acid, citric acid)) Kale (30%) Mango (18%) Lemon Grass (7%) Water (3%)	GRFS	10	0.15	1.50	238x165x150	30	10	300	450	28.94	2.89	0.25	3.14	